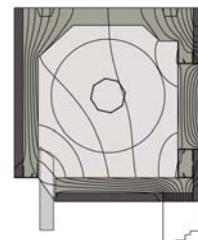
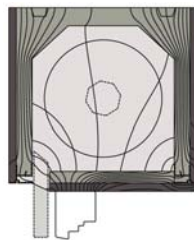
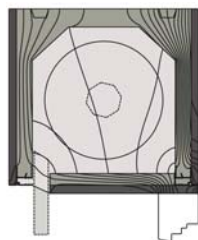


Valori della trasmittanza termica U in conformità con UNI ISO 10077-2:2007



MODELLO CASSONETTO	SERRAMENTO A FILO INTERNO (W/m ² K)	SERRAMENTO IN MAZZETTA (W/m ² K)	ISPEZIONE FRONTALE (W/m ² K)
Plus 22	1,065	1,169	1,123
Plus 25	1,159	1,328	1,573
Plus 26	1,177	1,350	-----
Plus 28	1,118	1,301	1,489
Plus 30	1,126	1,318	1,490
Plus 30/25	1,199	1,422	1,594
Plus 35	1,164	1,402	1,516
Late 30	1,074	1,156	1,352
Late 35	1,021	1,062	1,346
Iper 30	0,675	0,890	0,895
Iper 35	0,452	0,763	0,601
Iper M 32 (30+2)	0,520	0,813	-----
Iper M 33 (30+3)	0,445	0,774	-----
Iper M 37 (35+2)	0,425	0,747	-----
Iper M 38 (35+3)	0,407	0,736	-----
Iper M 40 (35+5)	0,362	0,721	-----
Roto 27 T	1,132	1,301	1,482
Roto 29 T	1,124	1,310	1,485
Roto 30 TH	0,700	0,923	0,779
Roto 35 TH	0,440	0,747	0,452
Sole 22	0,607	-----	-----
Sole 29	0,338	-----	-----